

Passive House em Mindelo

Mindelo

Construção nova - new building

Concluída



A Passive House apresentada corresponde a uma habitação unifamiliar com 2 piso, com uma área útil de 107 m² e localizada em Mindelo, concelho de Vila do Conde.

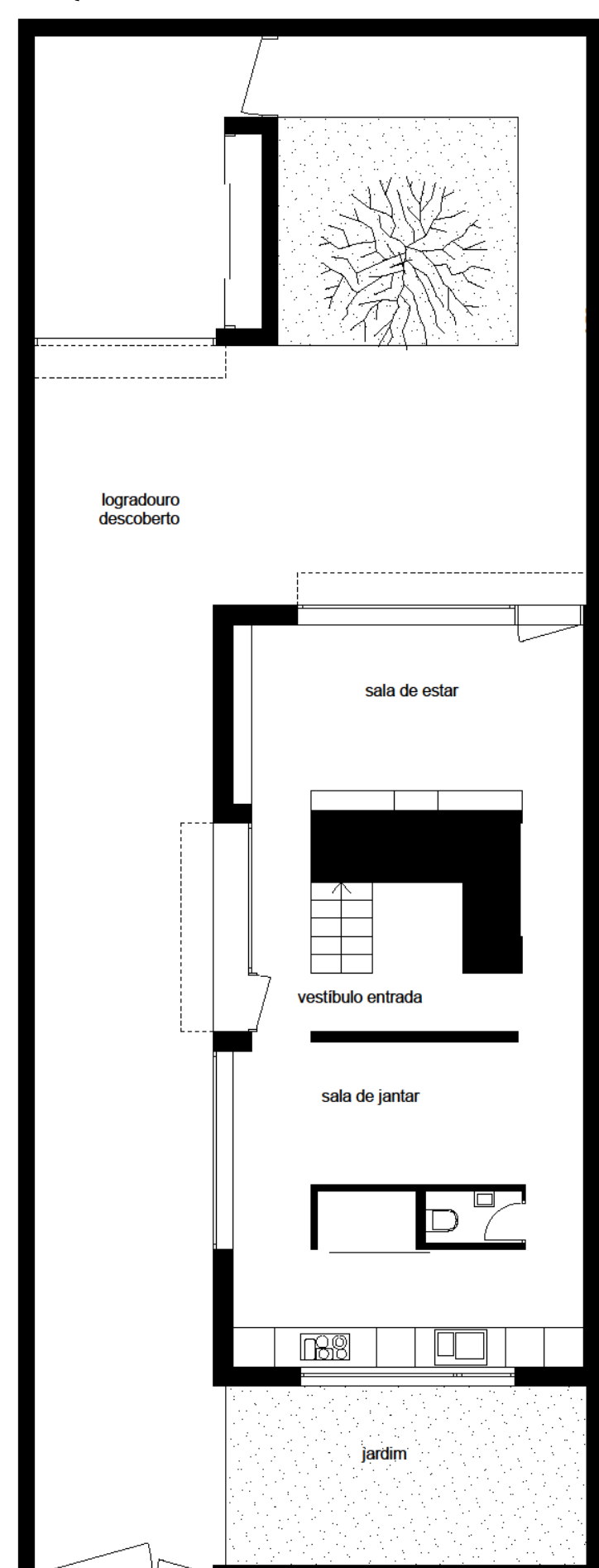
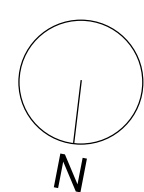
É a primeira Passive House certificada no distrito do Porto. A certificação foi realizada pela Homegrid.

The following Passive House is a single family building located in Mindelo, municipality of Vila do Conde, with two floors and a treated floor area of 107 m².

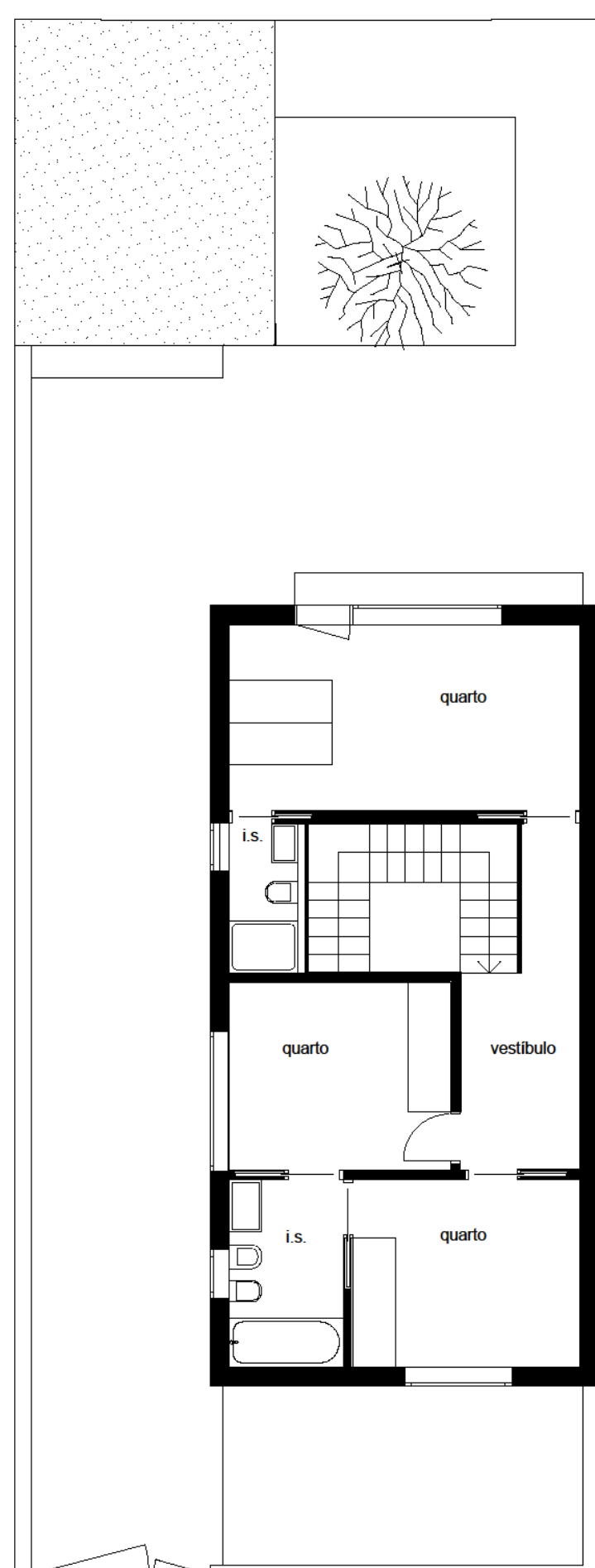
It is the first certified Passive House in the Oporto district. The certification was realized by Homegrid.

Specific building characteristics with reference to the treated floor area		Treated floor area m ²		Criteria	Alternative criteria	Fulfilled? ²
Space heating	Heating demand kWh/(m ² a)	106,9	≤	15	-	yes
	Heating load W/m ²	12	≤	-	10	
Space cooling	Cooling & dehum. demand kWh/(m ² a)	2	≤	16	16	yes
	Cooling load W/m ²	8	≤	-	10	
	Frequency of overheating (> 25 °C) %	-	≤	-	-	
	Frequency of excessively high humidity (> 12 g/kg) %	4	≤	10	-	yes
Airtightness	Pressurization test result n ₅₀ 1/h	0,6	≤	0,6	-	yes
Non-renewable Primary Energy (PE)	PE demand kWh/(m ² a)	76	≤	-	-	-
Primary Energy Renewable (PER)	PER demand kWh/(m ² a)	43	≤	60	60	yes
	Generation of renewable energy (in relation to projected building footprint area)	10	≥	-	-	

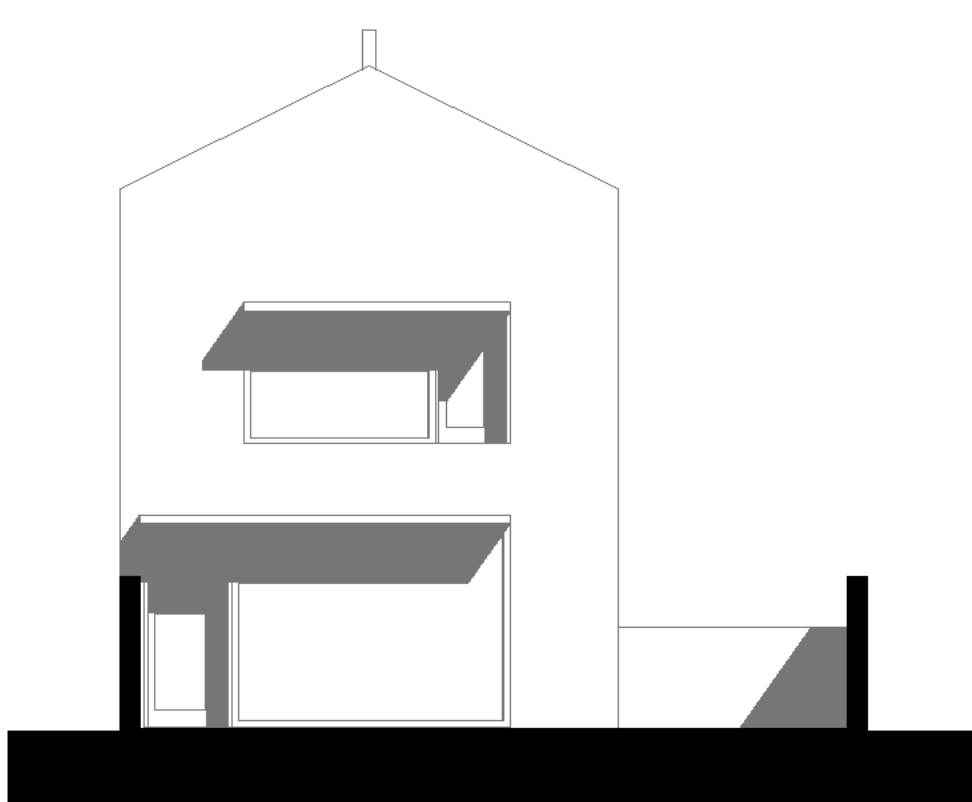
² Empty field; Data missing; '-': No requirement



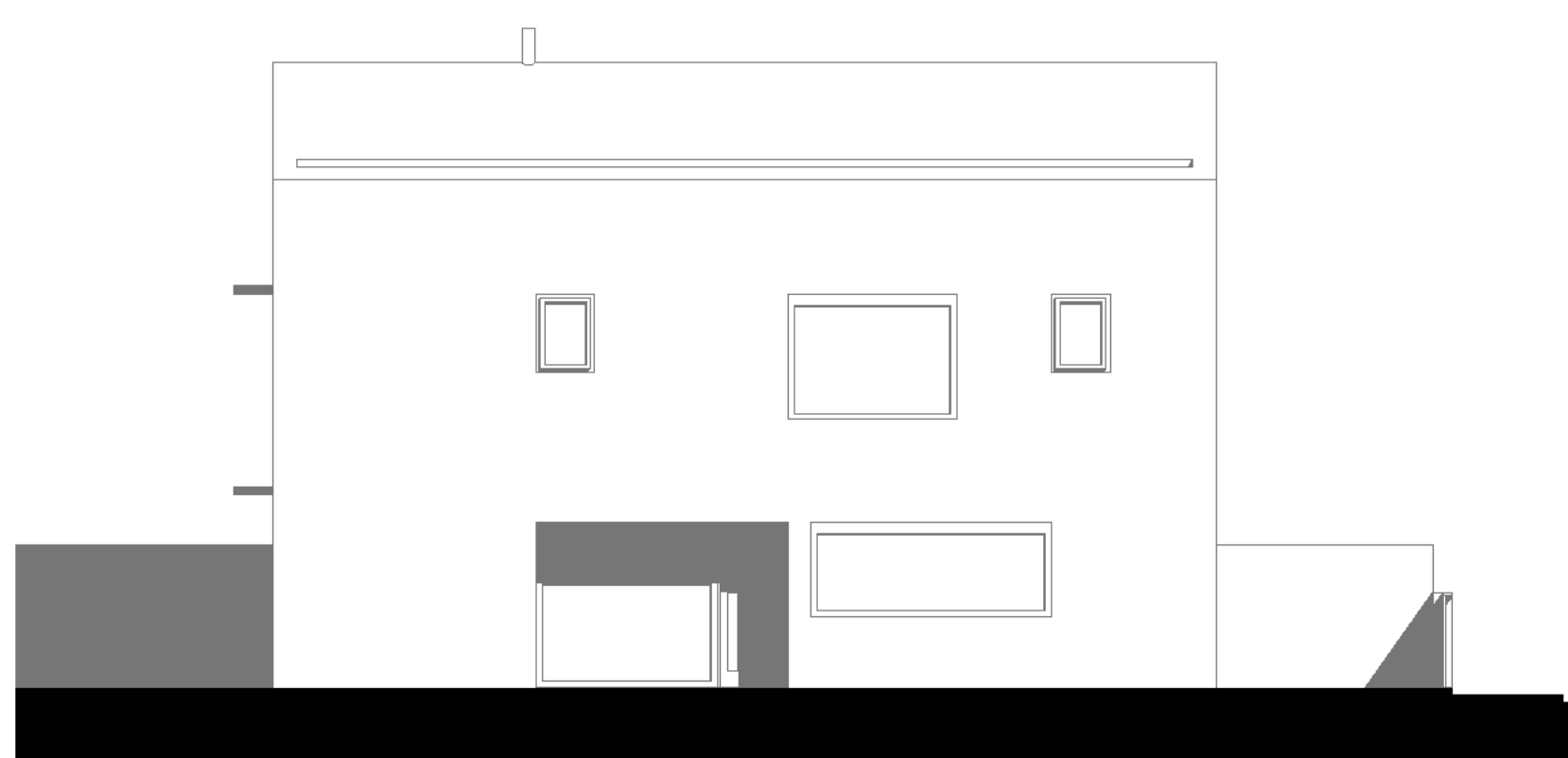
Planta r/chão



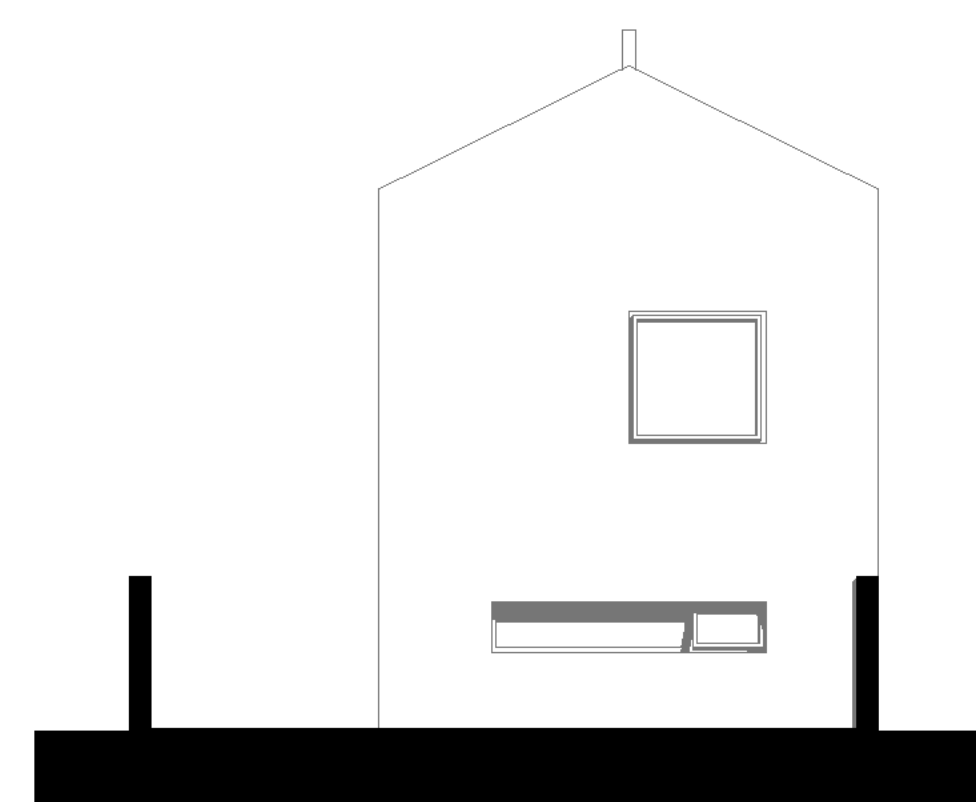
Planta 1º andar



Alçado tardoz (Sul)



Alçado lateral (Nacente)



Alçado frontal (Norte)